

# **OFFICIALS PROGRAM**

## **BASIC COURSE**

**February 19 and 20, 2005**

**Snow Mountain Ranch/ YMCA of the Rockies**

**Julia Collins**

**Colorado Biathlon Club**

**Thanks to Biathlon Nouveau- New Brunswick  
and Biathlon Canada**

# **OBJECTIVES OF THIS BASIC COURSE**

- **To train biathlon officials capable of working in any role required at CBC events**
- **To enhance your experience as a competitive biathlete**
- **To qualify you as a Basic official and to provide you with the skills and the knowledge to become an effective biathlon official**
- **To prepare you to advance in the Officials Program**

# **BASIC OFFICIAL POSITIONS IN AN (IBU) EVENT**

- **Equipment Controller (Start/ Finish)**
- **Start Assistant**
- **Course Controller**
- **Range Official**
- **Penalty Loop Controller**
- **Timing Official**
- **Course Groomer**
- **Stadium Worker**
- **Access Control Guard**
- **Communicator/ Runner**
- **Other tasks as assigned**

# **BASIC COURSE OUTLINE**

## **(8 hours total)**

- 1. Introduction to Biathlon**
- 2. Classes and Types of Competitions**
- 3. Organizations Appointments and Duties**
- 4. Competition Facilities**
- 5. Preparations for an Event and Competitions**
- 6. Operative Competition Rules**
- 7. Competition Activity - Duties and Tasks**
- 8. Biathlon Communications**

**Test - 70%**

# **LESSON 1**

## ***Introduction to Biathlon***

**Aim: To provide you introductory and general biathlon information.**

- **USBA and Biathlon Canada Officials Program**
- **General overview, definitions and history**
- **Governing and related organizations, current status**
- **Biathlon safety**

# **OBJECTIVES OF THE BIATHLON CANADA OFFICIALS PROGRAM**

- 1. To train competent Biathlon Officials**
- 2. To provide standardized training for all Biathlon Officials**
- 3. To build a legacy of expertise in officiating**
- 4. To train competent Technical Delegates and Referees**
- 5. To train a cadre of effective instructors**
- 6. To prepare officials for international qualification**

# OFFICIALS PROGRAMS

**Biathlon Canada:**  
**Basic**  
**Advanced**  
**Technical Delegate**

**Instructor**  
**Leader**

**USBA:**  
**Basic**  
**Advanced**

**IBU**

- **International Referee**
- **Technical Delegate**

# **USBA OFFICIALS PROGRAM**

**Basic: no prerequisites**

**Advanced:**

- **two years of experience**
- **four competitions experience**
- **USBA member**

**Chief of Officials: Alan Nye**

**Regional Lead Instructors:**

- **Rocky Mountain: Bill Freutel**
- **Midwest: Jack Lang**
- **East: Tracy Lamb**



# BIATHLON

*The word biathlon comes from Greek and means “two tests.”*

**The challenge of biathlon is the combination of two completely contradictory disciplines, one demanding full- out physical exertion over long distances and time periods and the other requiring precise control and stability.**

# BIATHLON DEFINITION

*Biathlon is an Olympic winter sport which combines competitive, free technique cross-country skiing and small-bore rifle marksmanship*

The term may also include any generically related activities of movement and shooting such as archery and skiing, mountain biking and shooting, running and shooting, roller-ski/ roller-blading and shooting and snowshoeing and shooting

# **OTHER FORMS OF BIATHLON**

- **Summer Biathlon**
- **Mountain Bike Biathlon**
- **Snowshoe Biathlon**
- **Archery Biathlon**
- **Disabled Biathlon**
- **Cadet Biathlon**
- **Military Biathlon**







# DISABLED BIATHLON

**Two main categories:**

## ***Blind/ visually Impaired***

- **Skiing with guide**
- **Shooting with audio system**

## ***Mobility disability***

- **Pulk skiing**
- **Prone shooting**







# COMPETITION

The *competition* is defined as the period of time which begins when the competitor enters the start control area and ends when he leaves the finish control area or the doping control, whichever occurs last. The *competition* is also a single competitive activity such as the Women's 7.5 km Sprint.

**THE WORD "COMPETITION" IS NOT INTERCHANGABLE WITH THE WORD "EVENT"**

# BIATHLON HISTORY

## *Earliest Record*

Cave drawings in Norway over 4000 years old

## *Development*

Hunting and warfare; first known competition in 1767 on Swedish/ Norwegian border

## *Continued Development* - Military

## *Olympic Sport*

- Demo sport at first OWG in Chamonix, France 1924 under name Military Patrol
- out of Olympics in 1948
- back in Squaw Valley 1960 under name Biathlon

# BIATHLON HISTORY

## *Recent History*

- first WCH (UIPMB) 1958
- first IR seminar, Sweden, 1964
- rifles changed to small-bore, 1978
- first JWCH in Voss, Norway, 1989
- Women in OWG 1992 (Myriam - bronze)
- IBU founded, 1993
- Pursuit competition added 1998
- final separation from UIPMB, 1999 (IOC)
- Mass Start competition added 1999

# Your local sport governing body



[www.coloradobiathlon.org](http://www.coloradobiathlon.org)

**President: Naomi Notman Butterfield**

**Executive Vice- president: TBD**

**Board Chairman: Dave Wells**

**Vice- president/ Snow Mountain: Dave Cleveland**

**Vice- president/ Eldora: Jan Ingebrigtsen**

**Vice- president/ Steamboat: Gary Osteen**

**Secretary: Julia Collins**

**Treasurer: Bill Quinlan**

# **Your National Sport Governing Body: USBA**

- **National governing body for biathlon in the USA**
- **Board of Directors/ Executive Board – currently being reviewed, redesigned**
- **moving to Portland ME after Torino 2006?**
- **Jurisdiction over US National events, coaching/ officials programs, National Team**
- **NACH and NAC with Biathlon Canada**
- **President: Bill Lilly**
- **Vice- President: Alan Nye**
- **Secretary: Art Stegen**
- **Treasurer: Andy Shepard**
- **Athlete rep: David Gieck**



Anders Besseberg (NOR), President

# International Biathlon Union



- **World governing body for Biathlon, 63 member nations, Congress every 2 years, office and Secretary General in Salzburg.**
- **Executive Board - elected (President, 6 VPs)**
- **Honorary Auditors - elected, two**
- **Technical Committee - elected, 10 members**
- **Appointed - Development, Medical, Legal Information, Athletes, Marketing Committees**
- **IBU has jurisdiction and control over WCH, Y/ JWCH WC, CCH, CC, SWCH, MCH with TD and IRs, and appoints TDs for OWG, CISM, FISU, continental games**

# SAFETY

**Biathlon competitions and training include firearms, which demands absolute focus and alertness on the part of athletes, coaches and officials to ensure safety. As well, fast paced skiing over demanding terrain imposes an additional safety concern for everyone in biathlon.**



# **LESSON 2**

## ***Classes and Types of Competitions***

**Aim: To teach you the Classes of Competitors and the Types of Competitions**

- **Classes of Competitors**
- **Eligibility: obligations, age, gender**
- **Types and specifications of Competitions**

# CLASSES OF COMPETITORS

## IBU

- Men and Women
- Junior Men and Women (19- 20)
- Youth Men and Women (17- 18)

## CANADA and USBA: same as IBU, plus . . .

- Master Men and Women (30+ ?)
- Senior Boys and Girls (15- 16)
- Junior Boys and Girls (13- 14)

## CANADA

- Division events also normally include Juveniles, Midgets

# CLASSES OF COMPETITORS

## USBA

- **Veteran Men and Women (45+ )**  
(see USBA June 2004 newsletter)

## CBC

- **Boys and Girls 15- 16**
- **Boys and Girls 13- 14**
- **Boys and Girls 10- 12**
- **Boys and Girls 9 and younger**
- **Masters: 35+ , 45+**
- **Combined classes for State and Class Champions (Boys and Girls 12 and younger, Boys and Girls 13- 16)**

# **CLASSES OF COMPETITORS**

## ***Men and Women***

**Male and female competitors who have completed their 21<sup>st</sup> year of life, at the cut-off-date 31 December, shall be called Men and Women respectively and according to gender shall start only in Men's and Women's competitions for the season starting with 1 November of the same year.**

# **CLASSES OF COMPETITORS**

## ***Junior Men and Junior Women***

**Male and female competitors who have completed their 19<sup>th</sup> year of life, at the cut-off-date 31 December shall be called Junior Men and Junior Women respectively and according to gender shall start only in Junior Men's and Junior Women's competitions for the season starting with 1 November of the same year. Separate competitions shall be organized for them. However, they shall be permitted to participate in Men's and Women's competitions according to gender.**

# **CLASSES OF COMPETITORS**

## ***Youth Men and Youth Women***

**Competitors who have not yet reached Junior Men's or Junior Women's age as defined above are Youth Men or Youth Women respectively and separate competitions shall be organized for them. However, Youth Men are permitted to take part in Men's and Junior Men's competitions and Youth Women are permitted to take part in Women's and Junior Women's competitions**

# **ELIGIBILITY RULES FOR COMPETITORS AND TEAMS**

**Only those competitors and team staff members who comply with the following IBU regulations are eligible to take part in Biathlon events and competitions organized by an IBU member federation.**

- Sign the IBU Declaration of Obligations**
- Sign the Court of Arbitration Agreement**
- Start only for one nation - valid passport, and may compete only for one nation in any one competition season (genuine link).**
- Must comply with Rule 45 and the Bylaw to Rule 45 of the IOC Charter**

# **COMPETITOR'S RESPONSIBILITY**

**A competitor may participate in an IBU event or competition only with equipment, clothing and advertising that are in accordance with the IBU Material Catalogue and other IBU regulations. It is the competitor's responsibility that he undergoes the start and finish equipment and clothing controls.**



# TYPES OF COMPETITIONS

- **Individual**
- **Sprint**
- **Pursuit**
- **Mass Start**
- **Relay**
- **Mixed Relay (Men and Women at WCH)**
- **Super Sprint**

# IBU TYPES OF COMPETITIONS 1

## MEN

- 20 km Individual
- 10 km Sprint
- 12.5 km Pursuit
- 15 km Mass Start
- 4 x 7.5 km Relay
- 6 km Super Sprint (3.6 km Super Sprint qualification)

## WOMEN

- 15 km Individual
- 7.5 km Sprint
- 10 km Pursuit
- 12.5 km Mass Start
- 4 x 6 km Relay
- 4 km Super Sprint (2.4 km Super Sprint qualification)

4 x 6 km Mixed Relay at WCH

# **IBU TYPES OF COMPETITIONS 2**

## **JUNIOR MEN**

- **15 km Individual**
- **10 km Sprint**
- **12.5 km Pursuit**
- **12.5 km Mass Start**
- **4 x 7.5 km Relay**
- **4 km Super Sprint (2.4 km Super Sprint qualification)**

## **JUNIOR WOMEN**

- **12.5 km Individual**
- **7.5 km Sprint**
- **10 km Pursuit**
- **10 km Mass Start**
- **3 x 6 km Relay**
- **4 km Super Sprint (2.4 km Super Sprint qualification)**

# **IBU TYPES OF COMPETITIONS 3**

## **YOUTH MEN**

- **12.5 km Individual**
- **7.5 km Sprint**
- **10 km Pursuit**
- **3 x 7.5 km Relay**
- **4 km Super Sprint  
(2.4 km Super Sprint  
qualification)**

## **YOUTH WOMEN**

- **10 km Individual**
- **6 km Sprint**
- **7.5 km Pursuit**
- **3 x 6 km Relay**
- **4 km Super Sprint  
(2.4 km Super Sprint  
qualification)**

## North American Classes and Types of Competitions (from *Biathlon Canada Annex A*)

CLASS	AGE	Individual	Sprint	Pursuit	Mass Start	Relay
Men	21+	20km PSPS	10km PS	12.5km PPSS	15km PPSS	3 X 7.5km PS
Women	21+	15km PSPS	7.5km PS	10km PPSS	12.5km PPSS	3 X 6km PS
Junior Men	19/ 20	15km PSPS	10km PS	12.5km PPSS	12.5km PPSS	3 X 7.5km PS
Junior Women	19/ 20	12.5km PSPS	7.5km PS	10km PPSS	10km PPSS	3 X 6km PS
Youth Men	17/ 18	12.5km PS	7.5km PS	10km PPSS	10km PPSS	Mixed Gender 2M/ 2W 4 X 6km
Youth Women	17/ 18	10km PSPS	6km PS	7.5km PPSS	7.5km PPSS	PS

- Notes:**
1. The IBU Rules definition of age classes shall be used specifically for the IBU classes and in principle for the other classes.
  2. If there are four or more competitors registered for any competition class, the competition shall be held and a champion declared.
  3. There is no time adjustment for Masters carrying or not carrying rifles

# North American Classes and Types of Competitions

The below classes are not officially part of the NACH or NAC events but may be allowed to participate if authorized by the host nation. They do not carry rifles in competitions and modified shot- penalties shall apply: 40 seconds for individual competitions, 100m penalty loop for all other competitions. Special range procedures apply to these classes.

CLASS	AGE	Individual	Sprint	Pursuit	Mass Start	Relay
Senior Boys/ Girls	15/ 16	7.5km PSPS	6km PS	7.5km PPSS	7.5km PPSS	Mixed Gender 2B/ 2G 4 X 4.5km PS

Boys/ Girls 15- 16 (CBC)	15/ 16	5km PPPP	3km PP	5km PPPP	5km PPPP	
-----------------------------	--------	-------------	-----------	-------------	-------------	--

Junior Boys/ Girls	13/ 14	6km PPP	4km PP	5km PPP	5km PPP	Mixed Gender 2B/ 2G 4 X 3km PP
--------------------	--------	------------	-----------	------------	------------	---

Boys/ Girls 13- 14 (CBC)	13/ 14	5km PPPP	3km PP	5km PPPP	5km PPPP	
-----------------------------	--------	-------------	-----------	-------------	-------------	--

# North American Classes and Types of Competitions

The below classes are not officially part of the NACH or NAC events but may be allowed to participate if authorized by the host nation. They do not carry rifles in competitions and modified shot- penalties shall apply: 40 seconds for individual competitions, 100m penalty loop for all other competitions. Special range procedures apply to these classes.

CLASS	AGE	Individual	Sprint	Pursuit	Mass Start	Relay
Masters Men	30+	10km PSP	6km PS	7.5km PPSS	7.5km PPSS	3 X 4.5km PS and may include any mixture of gender.
Masters Women	30+	10km PSP	6km PS	7.5km PPSS	7.5km PPSS	

Masters Men and Women (CBC)	35+	All distances and penalties same as Men/ Women				
-----------------------------	-----	--	--	--	--	--

Juvenile	12 and younger	Competitions are not normally organized for these classes but if they are distances must not exceed 3km, and must be designed for developmental training and fun				
----------	----------------	--	--	--	--	--

## Additional CBC Classes and Types of Competitions

CLASS	AGE	Individual	Sprint	Pursuit	Mass Start	Relay
Boys/ Girls 10- 12	10- 12	N/ A	3km PP	N/ A	N/ A	N/ A
Boys and Girls 9 and under	< = 9	N/ A	3km PP	N/ A	N/ A	N/ A



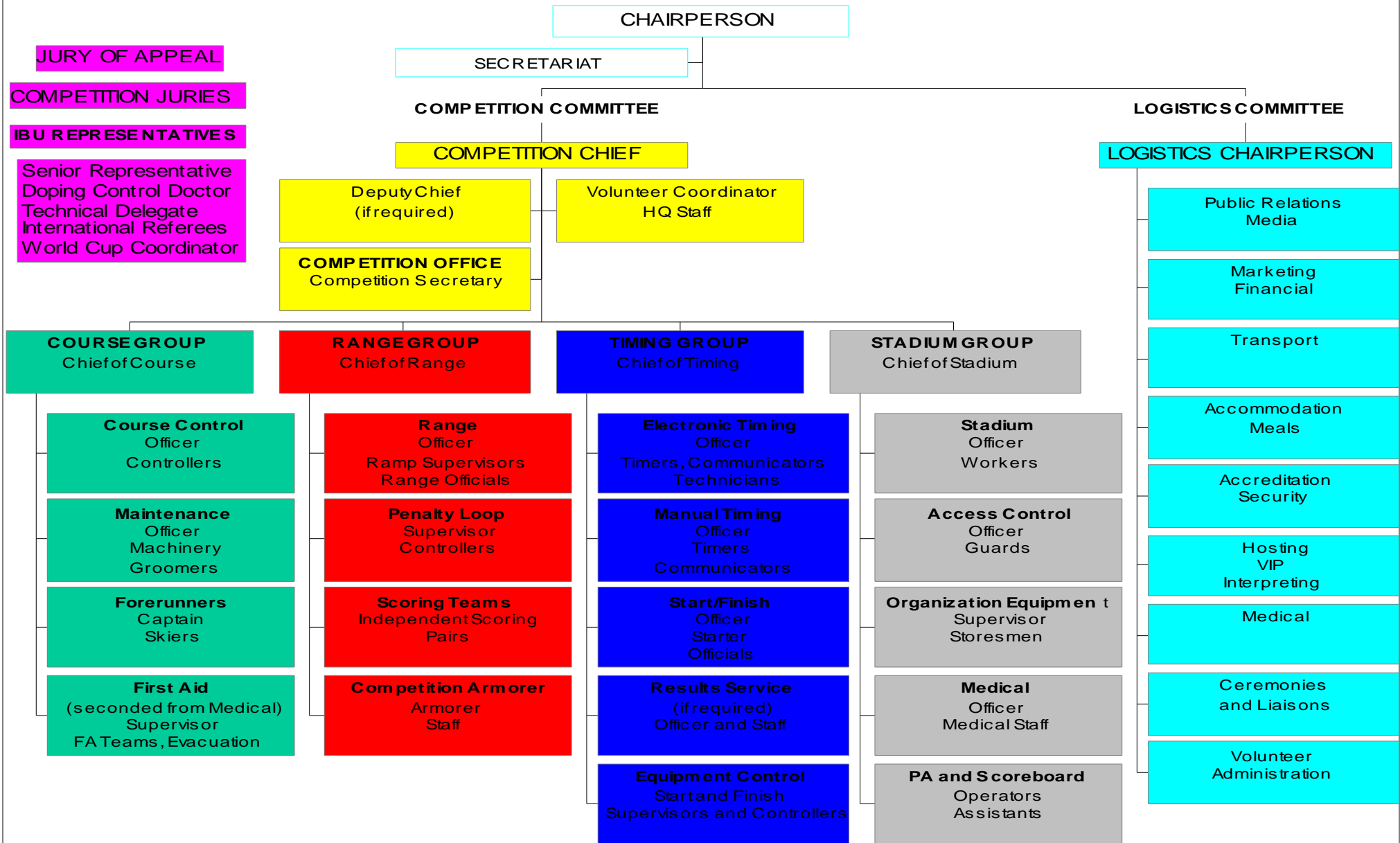
# **LESSON 3**

## ***Organizations, appointments and duties***

**Aim: To give you the necessary information about the organizations, appointments and duties associated with Biathlon events**

- **Organizing, Logistics and Competition Committees: Structure and Duties**
- **Juries, Technical Delegates, International Referees: Role and Duties**

# BIATHLON ORGANIZING COMMITTEE



# COMPETITION OFFICE

## Leader: Competition Secretary

Responsible for all Competition Committee administrative matters, including:

- manning and operation of the Competition Office (and sub-office if required)
- administrative support to the Competition Committee
- producing initial bulletins and invitations
- control of registrations and entries, with the TD and Jury
- preparing for and assisting in the conduct of team captains meetings and draws
- taking of minutes at all meetings, including team captains and Jury
- receiving protests
- providing information to teams
- providing mailboxes for teams
- providing administrative support for teams
- producing competition results as required
- producing Results Booklets

# COURSE GROUP

## Group Leader: Chief of Course

Responsible for all matters related to the course, including:

- course layout and configurations
- manning and operating the course
- ensuring the orderly conduct of the competition within the Group mandate
- trail, warm- up loop, penalty loop and ski test area
- grooming
- trail marking and signage
- fencing, and barricading unused trails
- course control (of competitors)
- forerunners
- first aid on the course
- ensuring that all IBU rules are enforced and recording of all violations of rules
- safety on the course

# RANGE GROUP

## Group Leader: Chief of Range

Responsible for all matters related to the shooting range, including:

- range layout and configurations
- manning and operating the range and penalty loop
- ensuring the orderly conduct of the competition within the Group mandate
- range grooming
- targets: painting, adjustments, operation
- range markings, numbering and signage
- rifle repair (emergency only), exchange of rifles, replacing lost/ defective ammunition,
- control and supervision of competitors on the range and the penalty loop
- range scoring and recording, penalty loop recording
- conducting zeroing and training on the range, including change of paper targets as required
- ensuring that all IBU rules are enforced and recording of all violations of the rules
- safety on the range

# TIMING GROUP

## Group Leader - Chief of Timing

Responsible for all matters related to time-keeping, records of the competition and control of competitors in the start and finish areas, including:

- manning and operating all timing and start/finish functions
- ensuring the orderly conduct of the competition within the Group mandate
- electronic timing
- manual timing
- compiling of records sent by other Groups
- production of Intermediate and Interim Results
- control and supervision of start and finish
- control and supervision of Relay hand-over zone
- operation of photo-finish camera and video at finish
- ensuring that all IBU rules are enforced and recording of all violations of the rules
- providing information to the public announcer and information board operator
- supporting the Competition Office for draws and team captains meetings

# **STADIUM (SUPPORT) GROUP**

## **Group Leader: Chief of Support (Stadium)**

Responsible for all support functions related to the competition, primarily in the stadium area, including

- control and supervision of start and finish equipment check points, including safety
- stadium layout and configurations
- manning and operating all support functions
- stadium grooming, marking and signage
- preparation and updating of all information boards
- preparation, care and cleanliness of all stadium facilities, including team waxing huts and toilets
- organizer's equipment storage and issue
- access control
- traffic and parking control
- public announcing
- operation of the electronic information board
- medical and first aid in central area, casualty evacuation
- ensuring that all IBU rules for the stadium area are enforced

# BIATHLON EVENT JURIES

## COMPETITION JURIES

- **Separate Juries for Men and Women, in force for the entire event**
- **Five members, TD is Chair**
- **Authority for all event matters**
- **Penalties, Time adjustments, Protests**

## JURY OF APPEAL

- **One Jury for the event**
- **Five members, Official IBU Representative is Chair**
- **Jurisdiction only to handle protests about disciplinary decisions made by the Competition Juries**



# **JURY STRUCTURES**

## ***COMPETITION JURIES***

- **TD - Chair**
- **Competition Chief**
- **Three other members elected by the team captains meeting**

## ***JURY OF APPEAL***

- **Official IBU (USBA) Representative - Chair**
- **Any other IBU (USBA) Executive Board members present at event**
- **Elected Team Captains as required**

# **COMPETITION JURY MEETINGS**

**The Competition Jury will meet when so directed by the Competition Jury Chairman.**

**Competition Jury meetings will normally be held as follows:**

- immediately after the team captains' meeting where it was elected;**
- approximately one hour before the start of the competition;**
- at any time during the competition when directed by the Competition Jury Chairman;**
- immediately before the last finish in the competition, or as soon as possible after the last shooting;**
- at any other time when a meeting is called by the Competition Jury Chair**

# ***TASKS OF THE COMPETITION JURY***

## **Prior to the Competition**

- a. competition facilities**
- b. eligibility of all competitors**
- c. supervise the draw;**
- d. postpone or annul for weather, etc.**
- e. restrict or prohibit training - weather**
- f. late entries**
- g. replacement of competitor - force majeure ;**
- h. protests about eligibility of competitors;**
- i. qualification records of competitors for  
OWG and WCH**
- j. appoint Competition Jury member for  
range**
- k. appoint Competition Jury member for  
equipment examinations;**
- l. order ammunition checks, if required.**

# **COMPETITION JURY TASKS**

## ***During the Competition***

- a) to ensure that the competition is conducted according to the IBU Event and Competition Rules;**
- b) to direct the necessary measures if difficulties occur such as heavy fog or a storm which seriously endanger the correct and fair conduct of the competition: an extreme option may be to stop the competition;**
- c) to decide on the admission of competitors who arrive late at the start due to force majeure.**

# ***COMPETITION JURY TASKS***

## **After the Competition**

- a. to oversee the critical process, immediately after the last finish, for the authorization of the unofficial awards ceremony and the posting of Interim Results;
- b. to decide on protests;
- c. to impose or reject the penalties on violations reported by the TD(s), IRs, Competition Jury and Organizing Committee officials;
- d. to determine necessary time adjustments;
- e. to annul the competition, if necessary;
- f. to order the repeat of a competition, if justified and possible.

# **COMPETITION JURY TASKS**

## ***Before, During and After the Competition***

**The Competition Jury must be prepared at all times to decide on all matters which are not covered in the Rules or other IBU regulations.**

# **CBC JURIES**

- **Competition Chief (Chair)**
- **Other event Chiefs**
- **Typically no formal meetings unless issues arise**

# **TECHNICAL DELEGATES: PRINCIPLES OF THE TD FUNCTION**

**The TD at an IBU (USBA, Biathlon Canada) event has three primary functions:**

- a) to represent the IBU (USBA, BC) in a technical capacity;**
- b) to ensure that the event and its competitions are conducted in accordance with the Rules and with other pertinent IBU (USBA, BC) regulations;**
- c) to act as a consultant and advisor to the organizer to ensure that the best possible competitions are held.**

**The TD is always the Competition Jury Chairman, an extremely critical position. Additionally, the TD functions as the leader of the IBU technical group of IRs (Biathlon Canada: National Referees; USBA: ?).**



# **INTERNATIONAL REFEREES: Principles of the IR function**

**IRs, like TDs, have the responsibility of being the technical representatives of IBU (USBA, BC) at an event, in their area of responsibility and under the direction of the TD. All of the principles which apply to the TD function apply to IRs, except being in the Competition Jury, within their own area of responsibility.**

# TD AND REFEREES AT WORK

